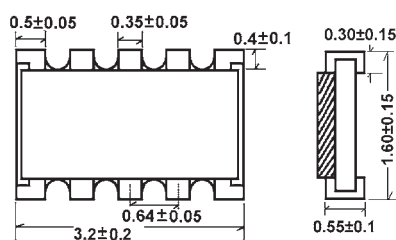
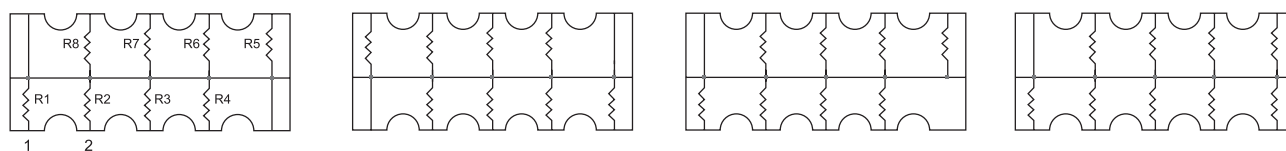


Dimension ( ) (mm)



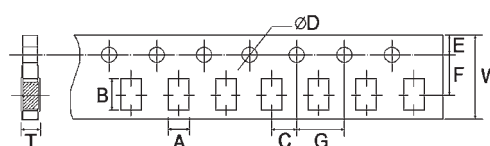
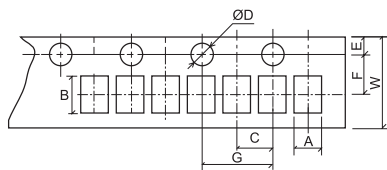
Equivalent Circuit Diagram ( )



Temperature Coefficient	$\pm 200\text{PPM}/^{\circ}\text{C}$
Short-time overload	$\pm(2.0\% \pm 0.05\Omega)$ Max.( )
Insulation resistance	$\geq 1,000\text{M}\Omega$
Dielectric withstanding voltage	No evidence of flashover, mechanical damage, arcing or insulation breakdown
Terminal bending	$\pm(1.0\% \pm 0.05\Omega)$ Max.( )
Soldering heat	$\Delta R/R \leq \pm(1.0\% \pm 0.05\Omega)$
Solderability	Min.95% coverage ( 95% )
Load life in humidity	$\pm(3.0\% \pm 0.1\Omega)$ Max.( )
Load life	$\pm(3.0\% \pm 0.1\Omega)$ Max.( )

• Please refer to page 5 for the information of Ordering Procedure (Part No.)

## Dimension of Paper Taping ( ) (mm)

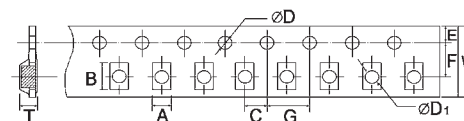


01005 0201 0402 HP02 HQ02 NM02 TC02 2C02 4C02 4D02 2D02

0603 0805 1206 1210 2010 0508 0612 1020 HQ03 HQ05 HQ06 HQ07 HQ10 HP03 HP05 HP06 HP07 HP10 HV03 HV05 HV06 HV07 HV10 NM03 NM05 NS03 NS05 NS06 AS03 AS05 AS06 PS05 PS07 CS03 CS05 CS06 CS07 CS10 TC03 TC05 TC06 TC07 TR05 TR06 TP03 TP05 TP06 4D03 4C03 10P8 10S8 10T8 10E9 16P8

Type ( )	A±0.2	B±0.2	C±0.05	Ø D $^{+0.1}_0$	E±0.1	F±0.05	G±0.1	W±0.2	T±0.1
01005	0.24±0.05	0.45±0.05	2.0	1.5	1.75	3.5	4.0	8.0	0.40
0201	0.40±0.05	0.70±0.05	2.0	1.5	1.75	3.5	4.0	8.0	0.42
0402, HP02, HQ02, NM02, TC02	0.65	1.15	2.0	1.5	1.75	3.5	4.0	8.0	0.45
0603, AS03, CS03, HP03, HQ03, HV03, NM03, NS03, TC03, TP03	1.10	1.90	2.0	1.5	1.75	3.5	4.0	8.0	0.67
0508, 0805, AS05, CS05, HP05, HQ05, HV05, NM05, NS05, PS05, TC05, TR05, TP05	1.65	2.40	2.0	1.5	1.75	3.5	4.0	8.0	0.81
0612, 1206, AS06, CS06, HP06, HQ06, HV06, NS06, PS06, TC06, TR06, TP06	2.00	3.60	2.0	1.5	1.75	3.5	4.0	8.0	0.81
1210, CS07, HP07, HQ07, HV07, PS07, TC07	2.80	3.50	2.0	1.5	1.75	3.5	4.0	8.0	0.75
2010, HP10, HQ10, HV10, 1020, CS10	2.80	5.40	2.0	1.5	1.75	5.5	4.0	12.0	0.75
2D02, 2C02	1.20	1.20	2.0	1.5	1.75	3.5	4.0	8.0	0.45
4D02, 4C02	1.20	2.20	2.0	1.5	1.75	3.5	4.0	8.0	0.70
4D03, 4C03	2.00	3.60	2.0	1.5	1.75	3.5	4.0	8.0	0.83
10P8, 10S8, 10T8, 10E9	2.00	3.60	2.0	1.5	1.75	3.5	4.0	8.0	0.85
16P8	1.80	4.30	2.0	1.5	1.75	5.5	4.0	12.0	0.75

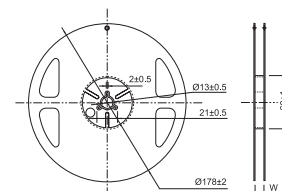
## Dimension of Embossed Taping ( ) (mm)



Type ( )	A±0.2	B±0.2	C±0.05	Ø D $^{+0.1}_0$	Ø D <sub>1</sub> $^{+0.25}_0$	E±0.1	F±0.05	G±0.1	W±0.2	T±0.1
TC10	2.9	5.6	2.0	1.5	1.5	1.75	5.5	4.0	12	1.0
1218, 1812	3.5	4.8	2.0	1.5	1.5	1.75	5.5	4.0	12	1.0
1225, 2512, CS12, HP12, HV12, TC12, HQ12	3.5	6.7	2.0	1.5	1.5	1.75	5.5	4.0	12	1.0

## Dimension of Reel ( ) (mm)

Type ( )	Tape	Qty. / Reel	Tape Width	W ± 1
01005	Paper	20,000pcs	8mm	10
0201, 0402*, HP02, HQ02, NM02, TC02	Paper	10,000pcs*	8mm	10
0603, AS03, CS03, HP03, HQ03, HV03, NM03, NS03, TC03, TP03	Paper	5,000pcs	8mm	10
0508, 0805, AS05, CS05, HP05, HQ05, HV05, NM05, NS05, PS05, TC05, TR05, TP05	Paper	5,000pcs	8mm	10
0612, 1206, AS06, CS06, HP06, HQ06, HV06, NS06, PS06, TC06, TR06, TP06	Paper	5,000pcs	8mm	10
1210, CS07, HP07, HQ07, HV07, PS07, TC07	Paper	5,000pcs	8mm	10
1020, 2010, CS10, HP10, HQ10, HV10	Paper			
1218, 1812, TC10	Embossed	4,000pcs	12mm	13.8
1225, 2512, CS12, HP12, HV12, TC12, HQ12	Embossed	4,000pcs	12mm	13.8
2D02, 2C02	Paper	10,000pcs	8mm	10
4D02, 4C02	Paper	10,000pcs	8mm	10
4D03, 4C03	Paper	5,000pcs	8mm	10
10P8, 10S8, 10T8, 10E9	Paper	5,000pcs	8mm	10
16P8	Paper	4,000pcs	12mm	13.8



\*Remark: 15,000 pcs/reel package could be offered for 0402 size. ( 0402 15,000 )

## Dimension of Bulk Cassette ( ) (mm)

36(H)×12(W)×110(L)

Bulk Cassette packing available on a case to case basis ( )

